



LARKSPUR FIRE PROTECTION DISTRICT
2017 ANNUAL REPORT

CONTENTS

MISSION STATEMENT, VISION AND VALUES.....	1
MESSAGE FROM THE BOARD CHAIR.....	2
MESSAGE FROM THE CHIEF.....	3
FINANCIALS.....	4
DISTRICT MAP.....	6
PERFORMANCE: Response Statistics.....	7
PERFORMANCE: Zone Statistics.....	8
OPERATIONS.....	9
TRAINING.....	10
VOLUNTEERS.....	11
PREVENTION.....	12
WILDLAND/URBAN INTERFACE.....	13
WILDFIRE MITIGATION.....	14

MISSION STATEMENT

Dedicated to our community through quality services, compassion, and excellence

VISION

To always be a cohesive team that is:

- Dedicated to compassion, quality services, and excellence
- Worthy of the trust and respect of our community and professional colleagues
- Committed to fostering a healthy, pleasant, safe, and cooperative work environment
- Devoted to innovation and progressive improvement
- Fully prepared for all emergencies
- Consistent and effectively communicating with our community
- Responsible in its approach to fiscal awareness

To be a leader in emergency services through:

- Open and effective communications
- Ensuring the fiscal responsibility of the District
- Being recognized as a community leader
- Being a community resource for public safety education
- Equitable and fair policies, practices, and programs
- Fostering paid staff and volunteer staff to help them be the best they can be
- Anticipating and positively influencing change

To be an organization that:

- Strives for excellence in service to our community
- Strives to provide a fair and balanced environment for citizens, paid staff, and volunteer staff
- Promotes consistently excellent service

VALUES

Teamwork	Valor	Loyalty
Trust	Compassion	Fairness
Confidence	Excellence	Professionalism

MESSAGE FROM THE BOARD CHAIR

I am pleased to present the 2017 Annual Report which summarizes one year among many that has encompassed our mission statement, “Dedicated to our community through quality services, compassion, and excellence.” I have been associated with the Larkspur Fire Protection District for 28 years in varying capacities. In August of 1989 I joined as a volunteer firefighter and retired from that position in December of 2007. Since then I have been involved in support functions such as the Larkspur Volunteer Fire Auxiliary and I have been the Chair of the Board of Directors for the past six years.



As a member of the Board of Directors I take great pride in supporting my community and fire district through ensuring responsible and efficient stewardship of taxpayer funds. The majority of the LFPD’s revenue is received from property taxes levied on residents of the District. Property tax revenue is supplemented by transport revenue and awards from several grant programs the District applies for on a regular basis. The combination of these revenues provide the means for equipment purchases and maintenance, salaries and benefits, personnel training, fixed facilities maintenance and utilities, and other associated costs necessary for our Firefighters, Emergency Medical Technicians and Paramedics to provide you with the highest level of service possible.

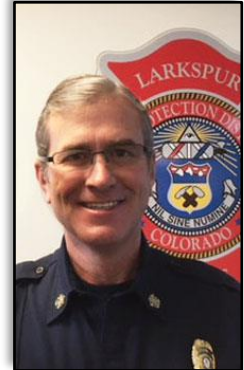
In closing, I would like to thank all the residents of the District for your continued support. If you have any questions, please do not hesitate to contact me. Additionally, please feel free to attend the monthly Board of Directors meeting which is held on the second Thursday of each month, at 7:00 p.m. at Station 161, 9414 Spruce Mountain Road.

Respectfully,

Peggy Whalen
Board Chair

MESSAGE FROM THE CHIEF

I have been an employee of the Larkspur Fire Protection District (LFPD) since April of 1998 and was appointed to the position of Fire Chief in January of 2015. From my first day as an employee of the District I have always been impressed by the professionalism, dedication, and comradery of the men and women of this amazing organization. All LFPD personnel, both paid and volunteer, are dedicated to providing the residents of the District with the highest level of service possible. As the Chief of the District it is my responsibility to promote the dedication and professionalism of our staff thus, maintaining a sustained high quality of service for our citizens and visitors to the area. This is achieved by continually striving to foster a workplace environment that is conducive to employee professional development, satisfaction, pride, and equality.



Our mission statement is “Dedicated to our community through quality services, compassion, and excellence.” As we and all other rural Colorado Special Districts move into the future however, there are legislative roadblocks that may result in significant financial hindrances which will cause difficulties in fully executing our missions. Specifically, these “legislative roadblocks” are the Gallagher Amendment in conjunction with restrictions imposed by the TABOR Amendment. Since it is not the intent of this report to describe the in-depth intricacies of the negatively synergistic issues created by these two amendments, I request that you review the following links at your leisure for a more comprehensive understanding of the problem.

- <http://www.sdaco.org/news/colorado%E2%80%99s-constitutional-funding-crisis-unintended-consequences-three-constitutional>
- <http://www.sdaco.org/news/gallagher-amendment-impact-district-finances-arises-again>
- <https://www.thedenverchannel.com/news/local-news/skyrocketing-property-values-on-front-range-harming-rural-fire-departments>
- <http://www.9news.com/article/news/local/politics/tax-laws-squeeze-rural-colorado-counties/73-432001324>
- <http://denver.cbslocal.com/2017/03/30/budget-cuts-rural-colorado-wildfires/>
- <https://www.denverpost.com/2017/12/21/rural-colorado-government-services-could-retreat-further-because-of-forecasts-pointing-to-more-property-tax-cuts-in-2019/>

Rest assured that, regardless of what challenges we face, the employees and volunteers of the LFPD will always hold your safety and well-being as our primary concern. Please take the time to review the remainder of the LFPD 2017 Annual Report, and if you have any questions or concerns, do not hesitate to contact me.

Respectfully,

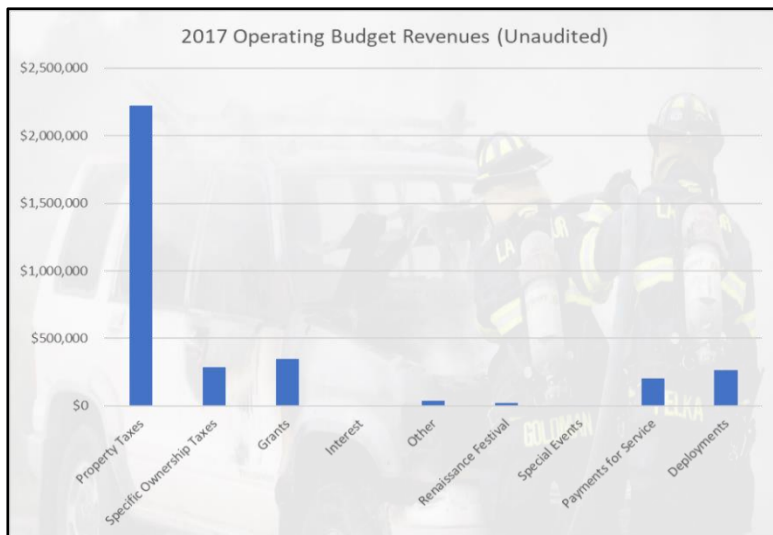
Stuart Mills
Fire Chief

FINANCIALS

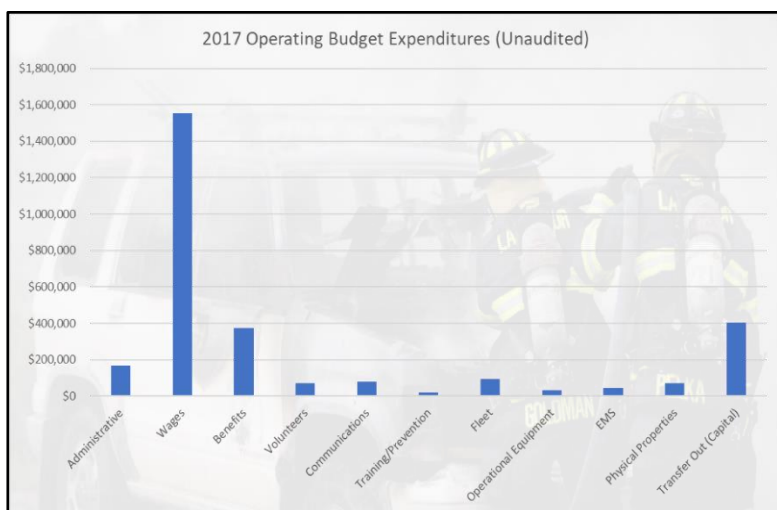
The annual budget is prepared by the Fire Chief with the assistance of the District's accountant, Administrative Assistant, Fire Marshal, Training Lieutenant, and Shift Captains. The annual budget is finalized each December by the District's Board of Directors. Frances Esty, the District's accountant, is delegated the responsibility of preparing monthly financial statements, reconciliation of bank accounts, tracking of expenses, and management of cash and debt.

The District's accountant is also delegated the responsibility of preparing the annual financial report and, along with all members of the Administrative/Command staff, of gathering required financial audit information. To certify appropriate fiscal responsibility, the District's annual financial activities are independently audited by Schilling & Company, Inc. Past Larkspur Fire Protection District audits are available upon direct request of the District or at:

https://dola.colorado.gov/dlg_portal/filings.jsf?id=18097&category=5&jfwid=0465cf217e5169df95f98fc66589%3A0.

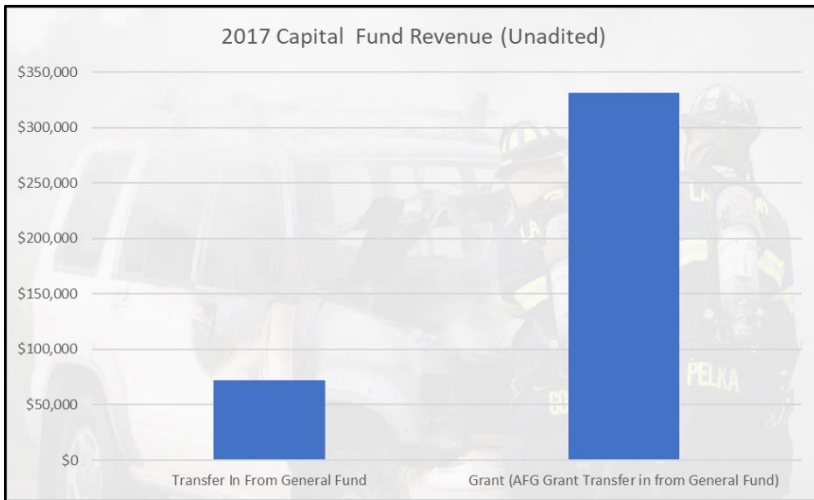


*Francis Esty
Accountant*

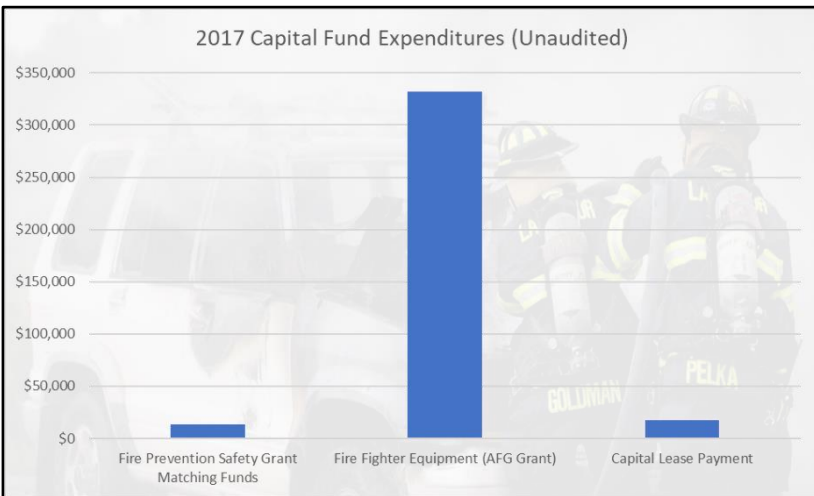


*Jodi Warner
Administrative Assistant*

FINANCIALS (continued)



*Fourteen APX6000 Portable Radios
Grant Funded in 2017 with a 5% District Match*



*Seven APX4500 Mobile Radios
Grant Funded in 2017 with a 5% District Match*



*Four Sets of Rescue42 Vehicle Stabilization Devices
Grant Funded in 2017 with a 5% District Match*

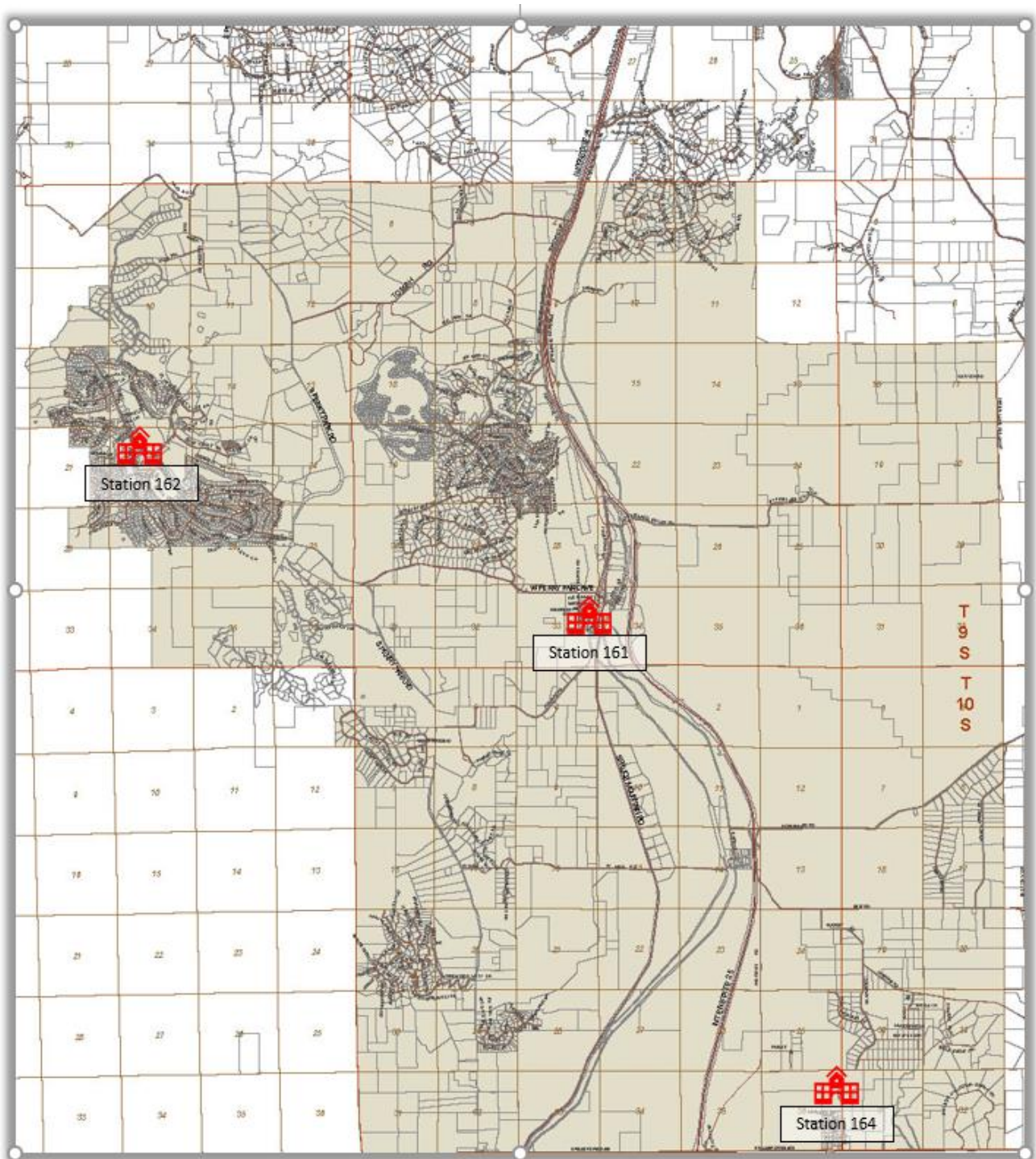


*Five Physio-Control Life Pak 15 Cardiac Monitors
Three Stryker PowerPro Hydraulic Ambulance Prams
Grant Funded in 2017 with a 5% District Match*



*Ten Sets of Bunker Gear
Grant Funded in 2017 with a 50% District Match*

LARKSPUR FIRE PROTECTION DISTRICT MAP



- Station 161: 9414 S. Spruce Mountain Road, Larkspur, CO 80118
- Station 162: 5680 Red Rock Drive, Larkspur, CO 80118
- Station 164: 15205 Furrow Road, Larkspur, CO 80118

PERFORMANCE: RESPONSE STATISTICS

Response Time Goals

LFPD strives to meet the standards of cover as outlined by the National Fire Protection Association (NFPA). For combination (paid and volunteer members) agencies in rural areas (less than 500 people per sq. mi.) that respond to fires, NFPA recommends an initial fire attack crew of six firefighters on scene within 14 minutes at least 80% of the time. As illustrated in the chart below, the average response time of LFPD to fire incidents is well below 14 minutes. Approximately 80% of the time the District has a minimum of six firefighters on duty and in-service ready to respond to emergency incidents.

Annual Alarm Summary and Average Response Times 1/1/2017 through 12/31/2017

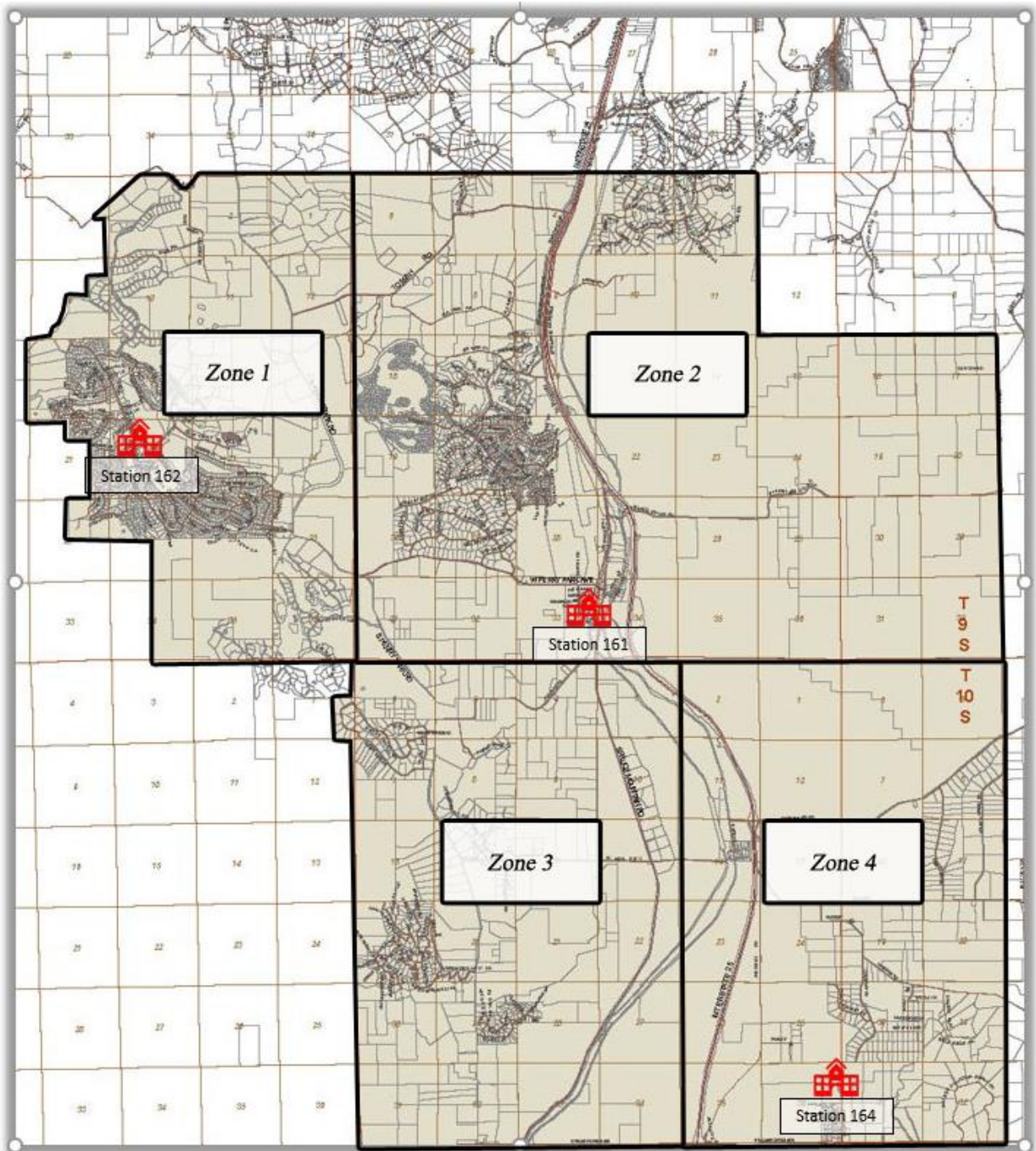
Incident Type	# In District	Avg Time (Minutes)	# Mutual Aid (Out of District)	Avg Time (Minutes)
100 Fire	23	10.09	25	35.07
200 Overpressure Rupture, Explosion, Overheat (No Fire)	1	9.60	0	0.00
300 Rescue & Emergency Medical Service Incident	512	9.58	49	14.75
400 Hazardous Condition (No Fire)	12	8.84	0	0.00
500 Service Call	54	8.30	3	11.02
600 Good Intent Call	137	9.27	41	7.87
700 False Alarm	30	10.08	3	13.42
800 Severe Weather & Natural Disaster	1	11.32	0	0.00
900 Special Incident Type	17	2.04	0	0.00
Totals	787	8.79	121	16.43



PERFORMANCE: ZONE STATISTICS

In District Responses and Average Response Times per Zone

- Zone 1: 132 responses, 8.69 minutes average response time
- Zone 2: 388 responses, 8.14 minutes average response time
- Zone 3: 76 responses, 8.05 minutes average response time
- Zone 4: 199 responses, 10.29 minutes average response time



OPERATIONS

LFPD operates three fire stations. Two of the stations (Station 161 and Station 162) are primarily staffed by 15 full-time, six half-time, and one part-time operational staff personnel who are assigned equally to one of three shifts; A-Shift, B-Shift, and C-Shift. Each shift is augmented by a volunteer operational staff of 30 volunteers. The third station (Station 164) stores reserve apparatus and has no living quarters.

Station 161 is the District's headquarters and is located centrally within the jurisdiction. Its full-time staffing consists of one Firefighter/Paramedic, two Firefighter/Emergency Medical Technicians, and a Shift Captain who is also Firefighter/Emergency Medical Technician. This crew responds by cross staffing; a Type-1 Engine, a Type-1 Ambulance, a Type-6 Brush Truck; and a Type-1 Tender. Station 161 also houses a Telesquirt utilized as a reserve Type-1 Engine, a reserve Type-1 Ambulance, and a Type-6 Brush Truck. The administrative/command staff maintains offices at this station and consists of the Fire Chief, Fire Marshal, Training Officer, and Administrative Assistant.

Station 162 is staffed by one Firefighter/Paramedic and one Firefighter/Emergency Medical Technician who cross staff a Type-1 Engine, a Type-1 Ambulance, a Type-6 Brush Truck, and a Type-1 Tender. Both staffed stations provide basic and advanced life support transport of patients to area hospitals. The closest hospital to the District is in the Town of Castle Rock and is 14 miles from the main station. Station 164 a Type-1 Engine, a Type-6 Brush Truck, and a Type-2 Tender.



*Station 161
9414 Spruce Mountain Road, Larkspur, CO 80118*



*Ryan Smedra
2017 Paid Firefighter of the Year*



*Station 162
5672 Red Rock Drive, Larkspur, CO 80118*



*Station 164
15205 Furrow Road, Larkspur, CO 80118*

TRAINING

Oversight of training is directed by Lieutenant Paul Hartigan. The training division supports employee professional development and training at all levels of the organization through budgeting, scheduling, program administration, and teaching.

In 2017 the Training Division oversaw:

- 2,212 hours of structural firefighter training
- 2,288 hours of medical training
- 986 hours of wildland training

2017 Training Accomplishments:

- Three Firefighter I certifications
- One Firefighter II certification
- Five Fire Officer I certifications
- One Fire Officer II certification
- Six Driver Operator certifications
- Two Driver Operator Pumper certifications
- Five Emergency Medical Technician Certifications
- Two Paramedic Certifications



*Paul Hartigan
Training Lieutenant/Volunteer Coordinator*

Conducted one Firefighter-I academy which included certification in hazardous materials, structural firefighting, wildland, traffic incident management, and ice rescue
Sponsored four individuals to attend the National Fire Academy in Emmitsburg, MD



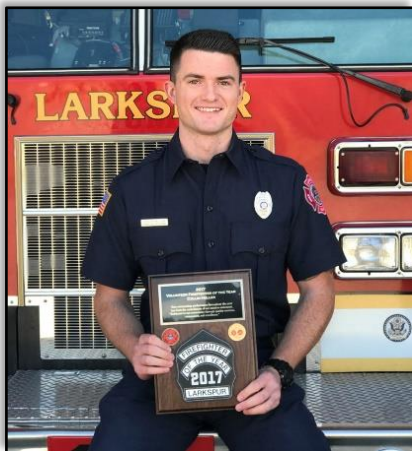
VOLUNTEERS

Volunteers are integral to the team at Larkspur Fire. The volunteer members of the District are certified at the minimum as a Firefighter I, in hazardous materials at the operations level, and in wildland firefighting. Most of them are also emergency medical technicians. When a new volunteer joins the District they participate in:

1. District orientation which is 20 hours.
2. Hazardous materials operations training which is 30 hours.
3. Wildland fire training which is 30 hours and has a written exam and practical field day test.
4. Structural firefighter training which is 160 hours.

There is a state of Colorado written and practical exam associated with the structural and hazardous materials portions as well as a live fire practical associated with the structural portion.

In 2017 we had as many as 30 volunteers on our roster who helped us meet the needs of the community. They served alongside the paid staff responding to calls for service and participation in local community events. In 2017 volunteers trained over 1,738 hours in all disciplines as it relates to operations and provided over 7,675 hours of service time that did not include training (total time was 9,413.68).



*Collin Heller
2017 Volunteer FF/EMT of the Year*



*Kim Greer 10 Year Volunteer FF/EMT Retirement
Rodger Greer 25 Year Volunteer FF/EMT Retirement*



*Matthew Sheridan
2017 Volunteer FF/EMT
Most Training Hours Award
(209.75 Hours)*

PREVENTION

The Fire Prevention Division is headed by the Fire Marshal. The Fire Marshal is responsible for Fire Code plan reviews of commercial construction projects and housing developments, commercial business inspections, fire investigations, and fire code enforcement. He works in unison with all Douglas County Fire Marshals and the Douglas County Building Division in the adoption of the Fire Code and the Building Code within Douglas County. The Fire Marshal works closely with the Fire Chief during the Fire District reviews by the Insurance Services Office (ISO), which administers the Fire Suppression Rating Schedule for the Fire District. ISO assigns public protection class ratings for our Fire District that play a large role in determining property insurance rates.



*Randy Johnson
Fire Marshal*

Fire prevention education also falls within the duties of the Division. The Fire Marshal speaks with HOA groups, Metropolitan Districts, Town of Larkspur residents, schools and has assisted Douglas County in presenting Citizen Emergency Response Training (CERT) for county residents and home fire safety for seniors. The LFPD holds an annual Wildfire Workshop for Fire District residents.

The Division also works with local communities on developing Community Wildfire Protection Plans and achieving Firewise Community status. The Division also performs home fire inspections and wildfire mitigation assessments of properties upon request. Educating district residents and developing a solid partnership with them is a large part of our mission to provide a safer environment for families and the communities they live in.

Along with adjoining fire agencies and outside groups such as the Pikes Peak Wildfire Prevention Partners, The Division reaches out to residents beyond the LFPD with messaging on wildfire mitigation and prevention. We know that their wildfire could become our wildfire as fires do not respect map boundaries.



Intrinsic to all the Division's activities there is the constant building of relationships and trust with Douglas County officials, neighboring fire agencies, other educational groups and our District residents. For without these relationships and trust in and from our partners, we are but a small island in an angry ocean. These valued relationships are how we measure our success.

WILDLAND/URBAN INTERFACE

The LFPD encompasses approximately 110 square miles of wildland fuels with wildland urban intermix and wildland urban interface environments included within. A variety of land forms and fuel models grace our District. Elevations across the District vary from 6400 ft. to 8500 ft. with terrain varying from gently rolling hills and towering buttes to steep mountain slopes and canyons along the eastern edge of the Rampart Range. Vegetation includes grass prairies, grass/brush environments, riparian ecosystems, oak/pine woodlands and dry mixed conifer forests.



We have 7 rural subdivisions in forested environments ranging from 15 to 800 homes in size. Egress from these communities varies from single to multiple routes out and the terrain varies from gently rolling to mountain tops. There are also numerous large lot homes and ranches scattered in a variety of terrains and fuel models. Homes range from small historic structures to 22,000 square foot new construction. Throughout our District, all our residents are at risk from wildfire.

Large wildfires have approached and threatened our District over the years causing pre-evacuation notices to be sent to our residents and actual evacuations have occurred due to Colorado's largest wildfire event, the Hayman Fire, in 2002. We have numerous wildfires within the District every year. Severity and scale of these fires fluctuate depending upon fuel and weather conditions. Fires in the District have ranged in size from small roadside fires measured in square feet to rangeland fires up to 350 acres. We take this threat to our District residents very seriously.

Wild fire causes are across the spectrum including; lightning strikes, railroad activity, faulty catalytic converters, vehicle fires, equipment malfunctions, electrical powerlines, welding/grinding and careless use of fire. Intentionally set arson wildfires have yet to plague our District, however arson wildfires have occurred in adjoining fire districts and the LFPD Fire Marshal has participated in several of those investigations.



Every year the LFPD sends some of our certified wildland firefighters to wildfires all over the United States to fight wildland fires. The experience they gain on large fires elsewhere is immeasurable and that experience is brought back to the LFPD to make a difference on fires here at home. They have garnered experience with structure protection, firing operations, air operations, and overhead management positions. This level of experience could not have been achieved while participating on in-District wildfires only. No training can match the hands-on experience with real wildfire.

WILDFIRE MITIGATION



A large wildfire event that consumes a community or communities within our District would be the most devastating event that could occur within the LFPD. Devastating in both the outcome and the number of residents affected. However, catastrophic wildfire is the one natural disaster that can be prevented. Wildfire will always occur but does not need to be catastrophic in consequence. Community scale mitigation of fuels and hardening homes against ember intrusion will reduce or prevent

significant losses. That is why wildfire mitigation is such a huge focus of the LFPD. We work with communities and individual property owners to educate, motivate and assist them with wildfire mitigation efforts.

The LFPD will visit properties upon request of the owner and provide an assessment of wildfire risk and make recommendations on how to reduce that risk. This process involves walking the property with the homeowner and providing an analysis of their particular situation. Throughout the walk through, an educational experience is provided by the LFPD on the fuel model at that location, the potential fire behavior, and how wildfire mitigation goes hand in hand with other land management responsibilities. We help to prioritize the mitigation efforts for the property owner in order to reduce the highest hazards first. The LFPD typically visits 40-80 homes each year and 48 sites were visited in 2017.

In working with communities, we start with a big picture look and help them to develop a Community Protection Plan or CWPP. This effort is done in conjunction with the Colorado State Forest Service, one of our many partners in wildfire preparedness. The CWPP provides an analysis of the wildfire risk factors that face the community as a whole and then develops an action plan that the community can implement to reduce those risks. The five of our largest communities within our Fire District are now covered by a CWPP.



WILDFIRE MITIGATION *(continued)*



We also work with communities to help them become Firewise Communities. This program is managed by the National Fire Protection Association (NFPA) and in which the Colorado State Forest Service also plays a role. Five of our communities in our Fire District have achieved Firewise Community Status. Perry Park is one of the first twelve communities in the entire United States to achieve that status and is one of the nine communities out of the first twelve that continues

to maintain that status. We have helped to coordinate projects outlined in CWPPs with adjoining property owners including Douglas County and the Pike National Forest. The LFPD is actively involved in community slash reduction by providing the resources to manage a massive pile burn with the Perry Park community every year, conditions allowing.